



Leander Road, Brixton, SW2

2 bedroom flat for sale

£434,950

Leasehold

Property Details

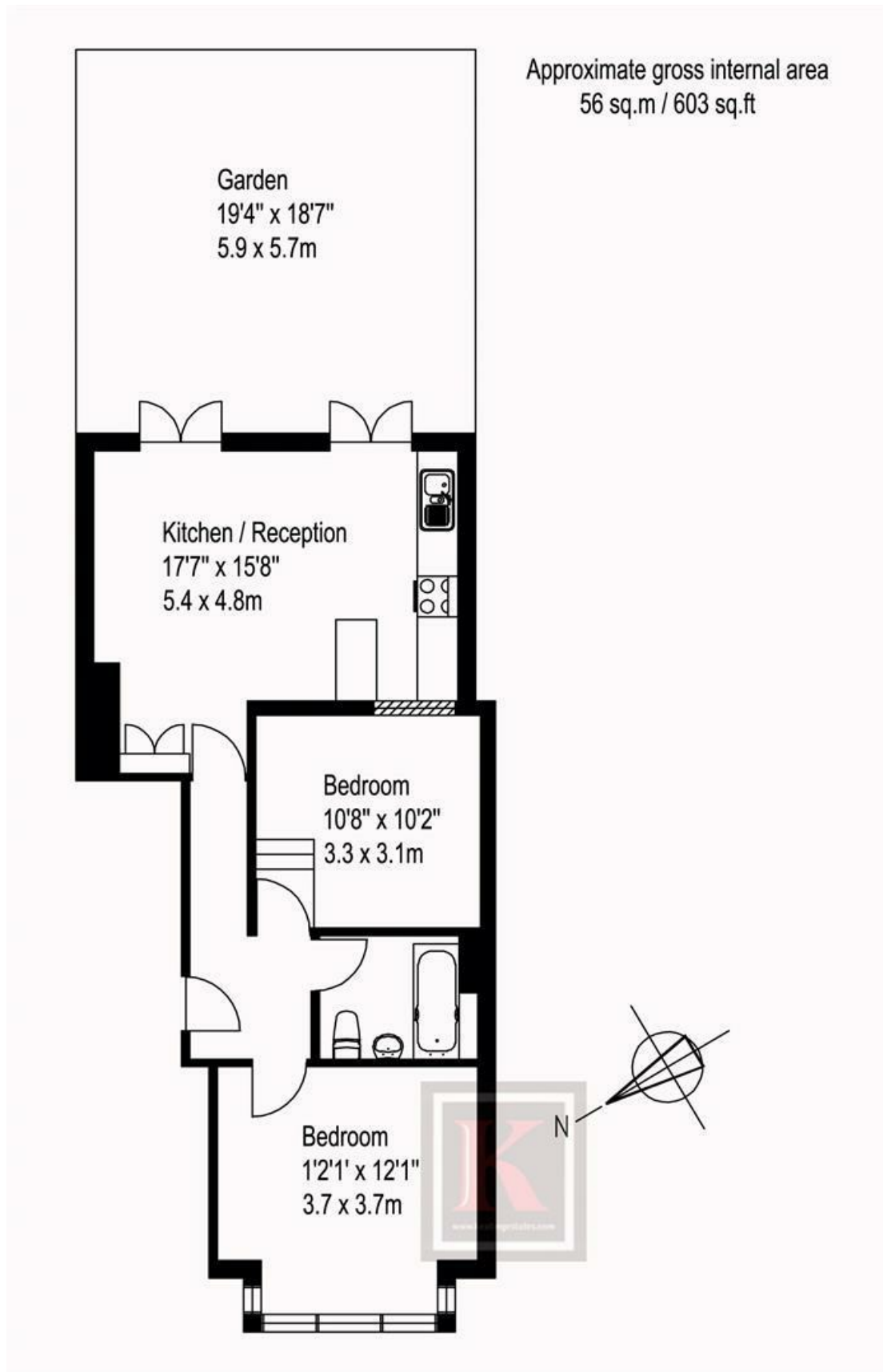
As you enter the property there are two double bedrooms and a modern bathroom. A short hallway leads to an open plan kitchen/reception with doors leading onto a well maintained patio garden. The property benefits from excellent living/entertaining space and neutral decor throughout. Leander Road is a Victorian residential terraced street popular for its close proximity to Brockwell Park and a wide selection of local transport links which include Brixton tube, Herne Hill (British Rail) and numerous bus links into central London.

Features

Council tax band C EPC rating D (68)



Leander Road, Brixton, SW2



Leander Road, Brixton, SW2

